



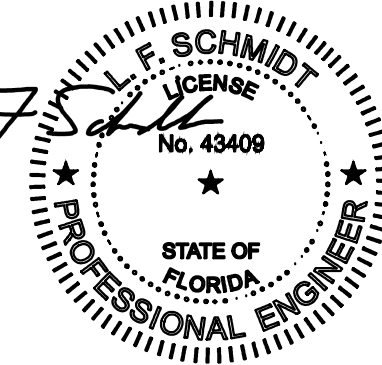
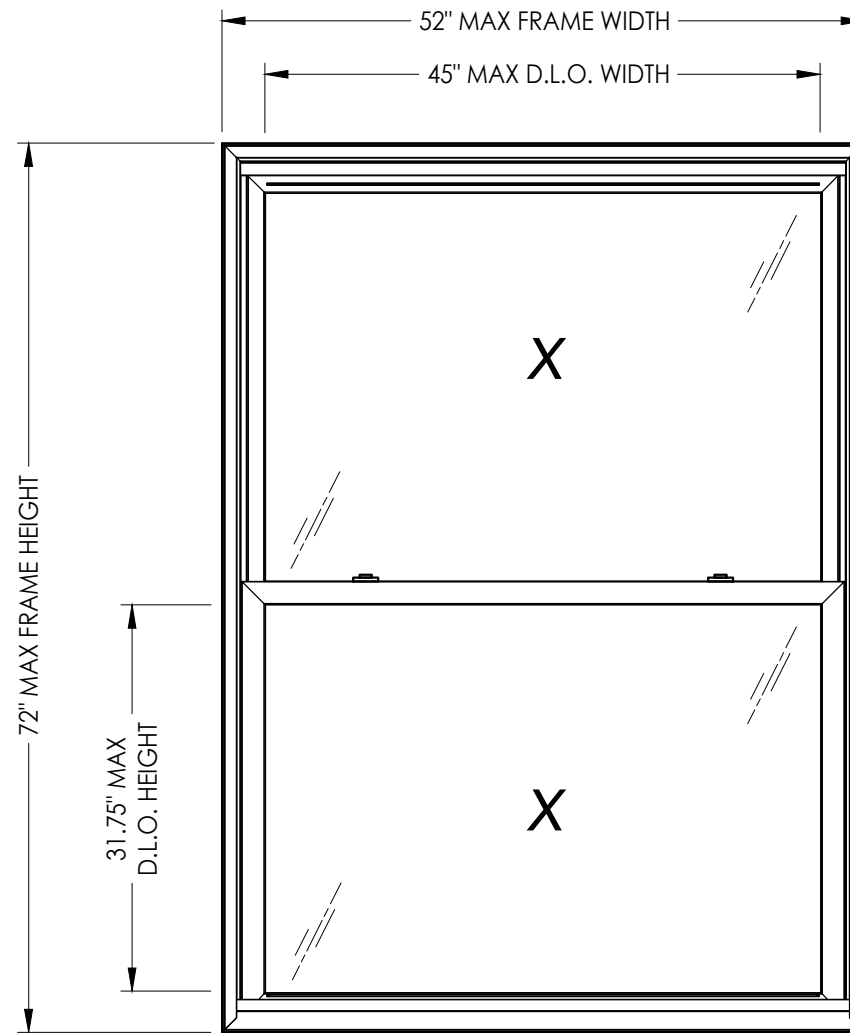
250 Staunton Turnpike, Parkersburg, WV 26104

# 7700 / 9900 Series Vinyl Double Hung Window "NON-IMPACT"

### GENERAL NOTES

- This product has been evaluated and is in compliance with the 8th Edition (2023) Florida Building Code (FBC) structural requirements excluding the "High Velocity Hurricane Zone" (HVHZ).
- Product anchors shall be as listed and spaced as shown on details. Anchor embedment to base material shall be beyond wall dressing or stucco.
- When used in areas requiring wind borne debris protection this product is required to be protected with an impact resistant covering that complies with FBC Sections 1609.1.2 & R301.2.1.2.
- For 2x stud framing construction, anchoring of these units shall be the same as that shown for 2x buck masonry construction.
- Site conditions that deviate from the details of this drawing require further engineering analysis by a licensed engineer or registered architect.

TABLE OF CONTENTS	
SHEET#	DESCRIPTION
1	Typical elevations, design pressures and general notes
2	Horizontal cross sections
3	Vertical cross sections
4	Buck and frame anchoring
5	Bill of materials, components & glazing details



This item has been digitally signed and sealed by L. F. Schmidt, P.E. on the date adjacent to the seal. Printed copies of this document are not considered signed and sealed and the signature must be verified on any electronic copies.

THIS PRODUCT APPROVAL IS VALID ONLY FOR THE STATE OF FLORIDA

MAX. FRAME DIMENSION	MAX. D.L.O. DIMENSION	GLASS TYPE	DESIGN PRESSURE (PSF)	
			POSITIVE	NEGATIVE
32.0" X 58.0"	25.0" X 24.75"	G1, G2	+55.0	-55.0
52.0" X 40.0"	45.0" X 15.75"	G1, G2	+45.0	-45.0
48.0" X 42.0"	41.0" X 16.75"	G1, G2	+45.0	-45.0
44.0" X 46.0"	37.0" X 18.75"	G1, G2	+45.0	-45.0
40.0" X 52.0"	33.0" X 21.75"	G1, G2	+45.0	-45.0
36.0" X 56.0"	29.0" X 23.75"	G1, G2	+45.0	-45.0
32.0" X 64.0"	25.0" X 27.75"	G1, G2	+45.0	-45.0
52.0" X 44.0"	45.0" X 17.75"	G1, G2	+40.0	-40.0
48.0" X 48.0"	41.0" X 19.75"	G1, G2	+40.0	-40.0
44.0" X 52.0"	37.0" X 21.75"	G1, G2	+40.0	-40.0
40.0" X 58.0"	33.0" X 24.75"	G1, G2	+40.0	-40.0

MAX. FRAME DIMENSION	MAX. D.L.O. DIMENSION	GLASS TYPE	DESIGN PRESSURE (PSF)	
			POSITIVE	NEGATIVE
36.0" X 64.0"	29.0" X 27.75"	G1, G2	+40.0	-40.0
32.0" X 70.0"	25.0" X 30.75"	G1, G2	+40.0	-40.0
52.0" X 50.0"	45.0" X 20.75"	G1, G2	+35.0	-35.0
48.0" X 54.0"	41.0" X 22.75"	G1, G2	+35.0	-35.0
44.0" X 60.0"	37.0" X 25.75"	G1, G2	+35.0	-35.0
40.0" X 66.0"	33.0" X 28.75"	G1, G2	+35.0	-35.0
36.0" X 72.0"	29.0" X 31.75"	G1, G2	+35.0	-35.0
52.0" X 60.0"	45.0" X 25.75"	G1, G2	+30.0	-30.0
48.0" X 64.0"	41.0" X 27.75"	G1, G2	+30.0	-30.0
44.0" X 70.0"	37.0" X 30.75"	G1, G2	+30.0	-30.0
40.0" X 72.0"	33.0" X 31.75"	G1, G2	+30.0	-30.0
52.0" X 72.0"	45.0" X 31.75"	G1, G2	+25.0	-25.0

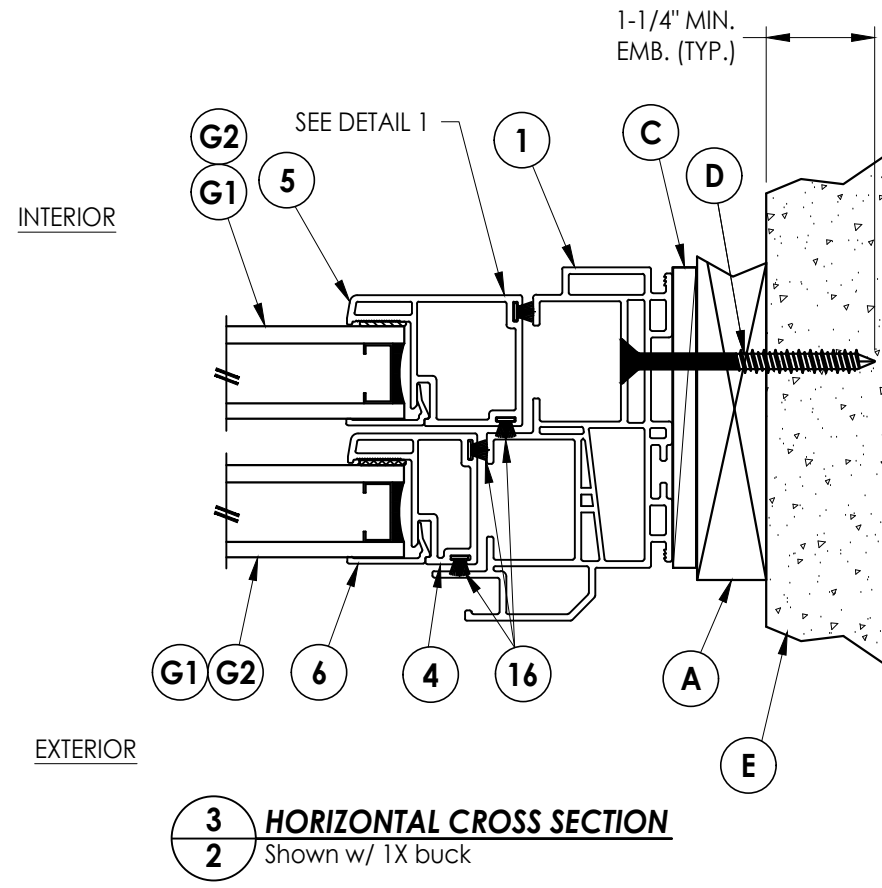
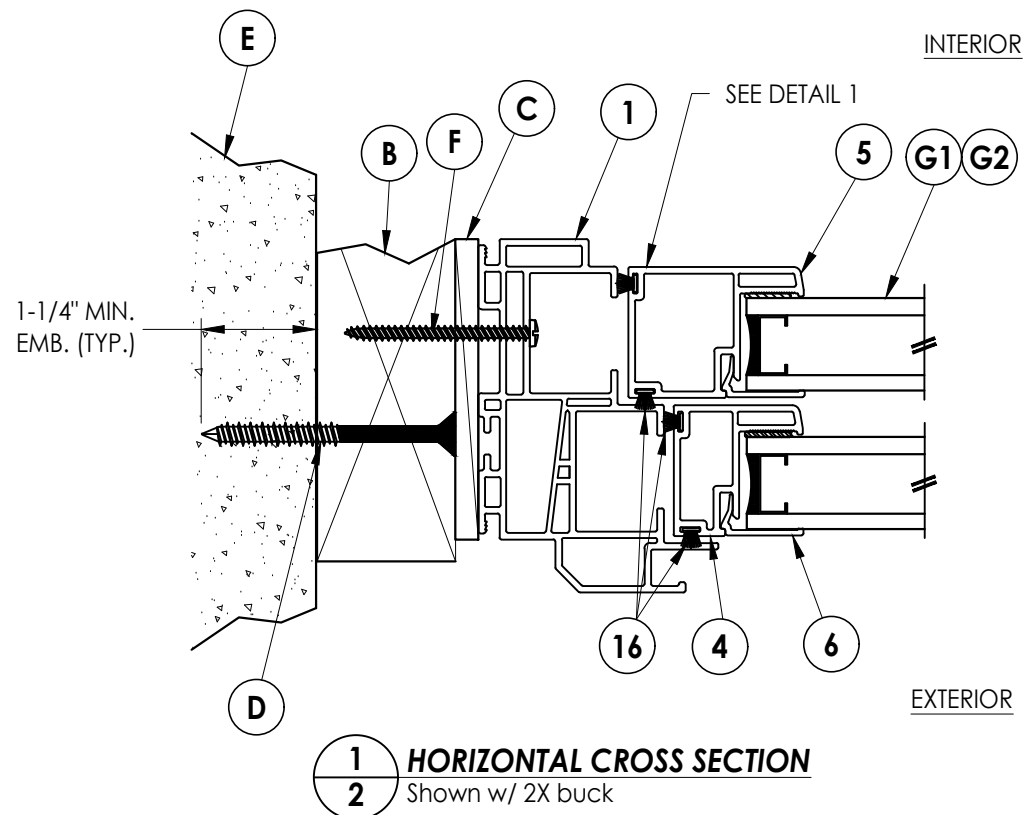
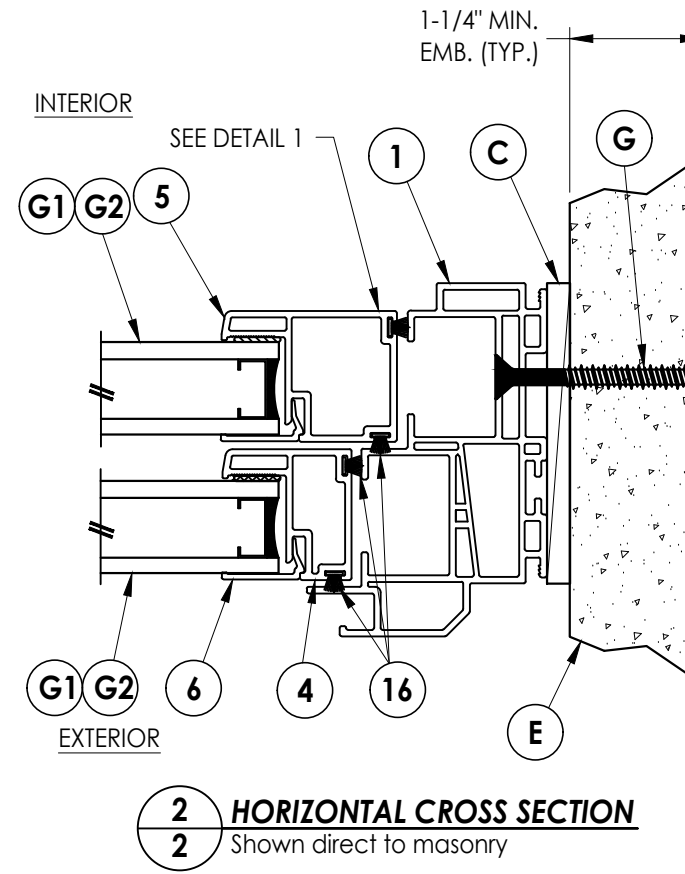
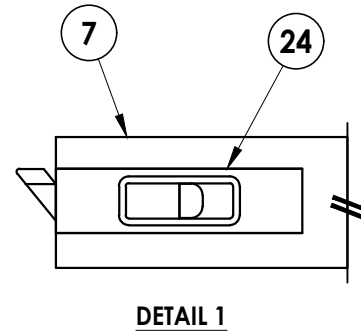
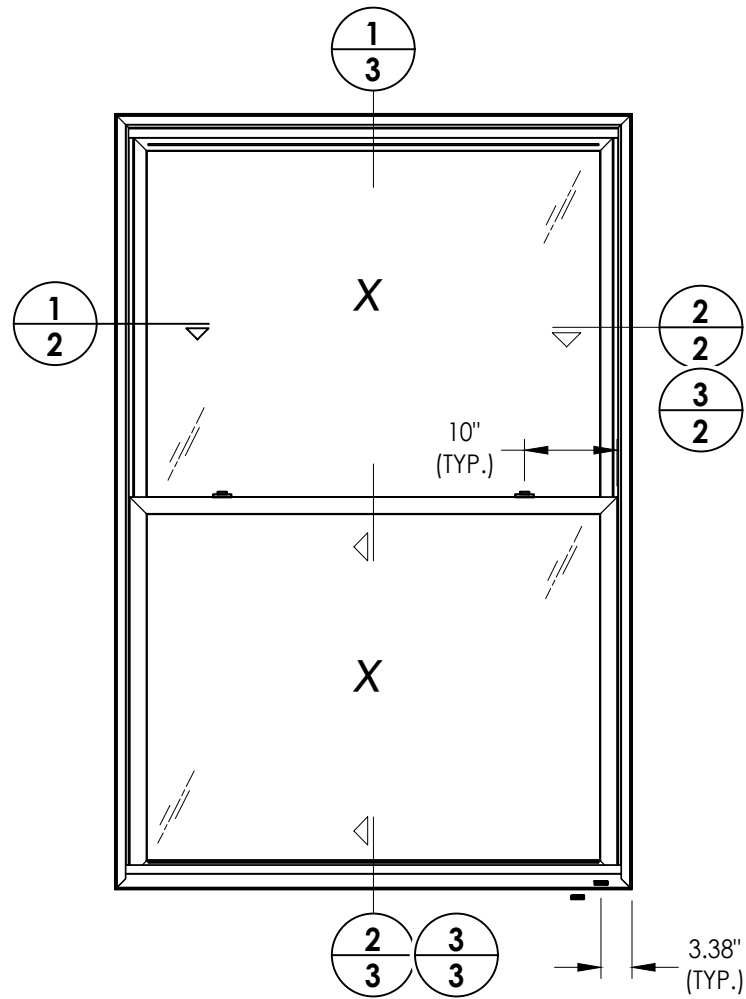
Documents Prepared By:  
Lyndon F. Schmidt  
P.E. No. 43409

*RW* BUILDING CONSULTANTS, INC.  
P.O. Box 230, Vairico, FL 33595  
Phone No.: 813.659.9197  
FBPE Registry No. 9813

PRODUCT: 7700 / 9900 SERIES Vinyl Double Hung Window  
PART OR ASSEMBLY: TYPICAL ELEVATION, DESIGN PRESSURES & GENERAL NOTES

NO.	DATE	REVISIONS
6	7/06/23	UPDATE TO 8TH ED. (2023) FBC
5	7/02/20	UPDATE TO 7TH ED. (2020) FBC
4	6/01/17	UPDATE TO 6TH ED. (2017) FBC
3	5/10/16	REVISE INSTALLATION SCREWS
2	1/27/15	UPDATE TO 5TH ED. (2014) FBC
1	8/25/14	REVISE SERIES NO.

DATE: 6/23/14  
SCALE: N.T.S.  
DWG. BY: JK  
CHK. BY: LFS  
DRAWING NO.: FL-15819.8  
SHEET 1 OF 5



Documents Prepared By:  
Lyndon F. Schmidt  
P.E. No. 43409

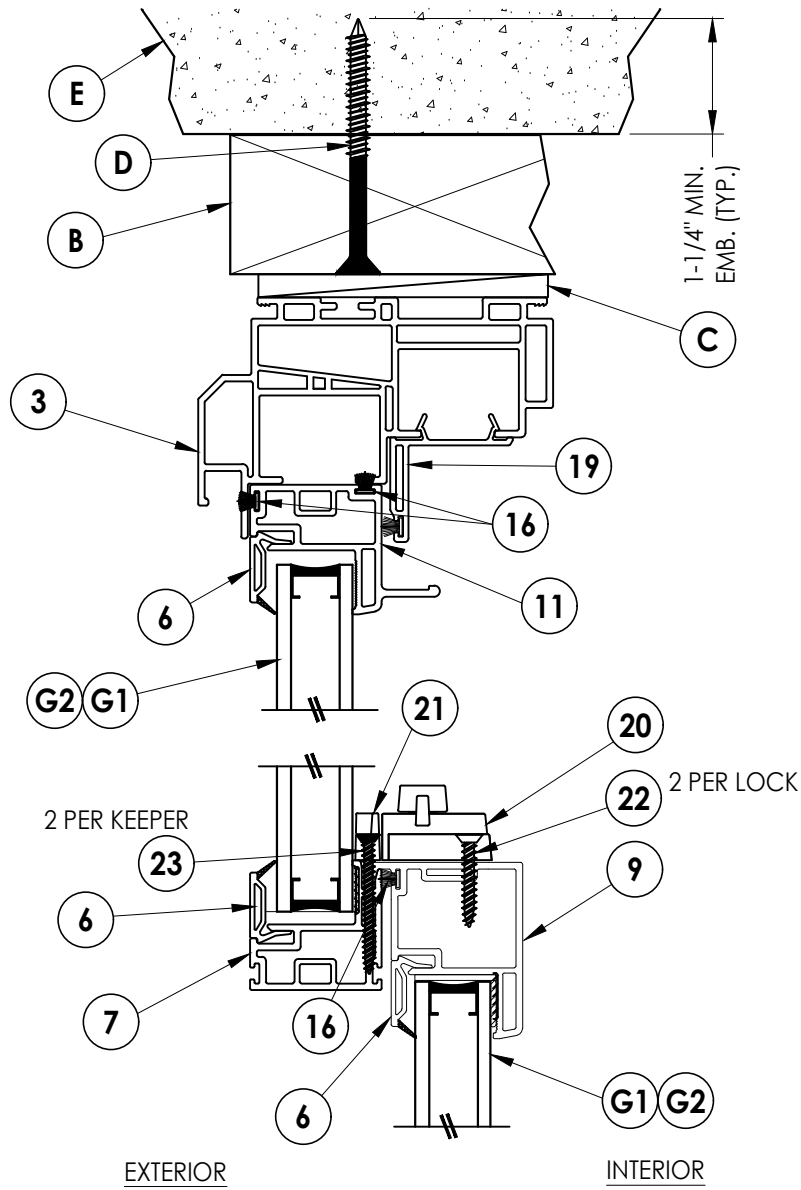
**RW** BUILDING CONSULTANTS, INC.  
P.O. Box 230, Vairico, FL 33595  
Phone No.: 813.659.9197  
FBPE Registry No. 9813

PRODUCT:  
7700 / 9900 SERIES  
Vinyl Double Hung Window

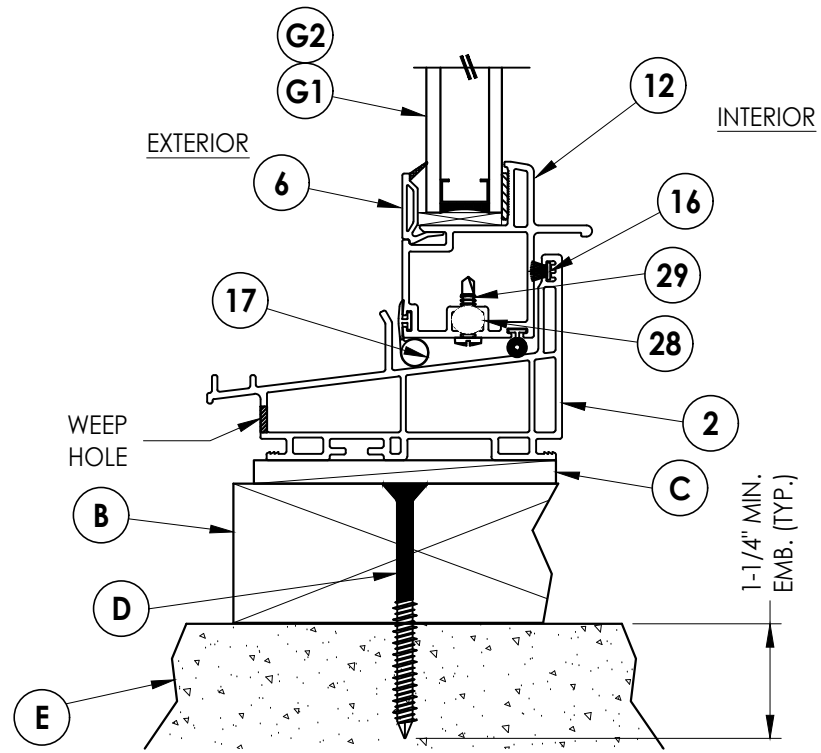
PART OR ASSEMBLY:  
HORIZONTAL  
CROSS SECTIONS

NO.	DATE	REVISIONS
6	7/06/23	UPDATE TO 8TH ED. (2023) FBC
5	7/02/20	UPDATE TO 7TH ED. (2020) FBC
4	6/01/17	UPDATE TO 6TH ED. (2017) FBC
3	5/10/16	REVISE INSTALLATION SCREWS
2	1/27/15	UPDATE TO 5TH ED. (2014) FBC
1	8/25/14	REVISE SERIES NO.

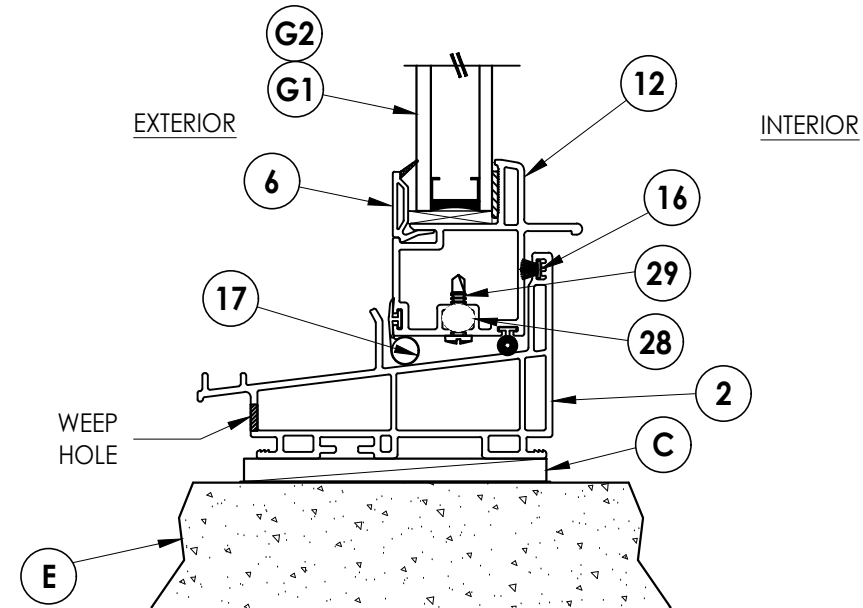
DATE: 6/23/14  
SCALE: N.T.S.  
DWG. BY: JK  
CHK. BY: LFS  
DRAWING NO.: FL-15819.8  
SHEET 2 OF 5



**1** VERTICAL CROSS SECTION  
**3** Shown w/ 2X buck



**2** VERTICAL CROSS SECTION  
**3** Shown w/ 2X buck



**3** VERTICAL CROSS SECTION  
**3** Shown direct to masonry

Documents Prepared By:  
 Lyndon F. Schmidt  
 P.E. No. 43409

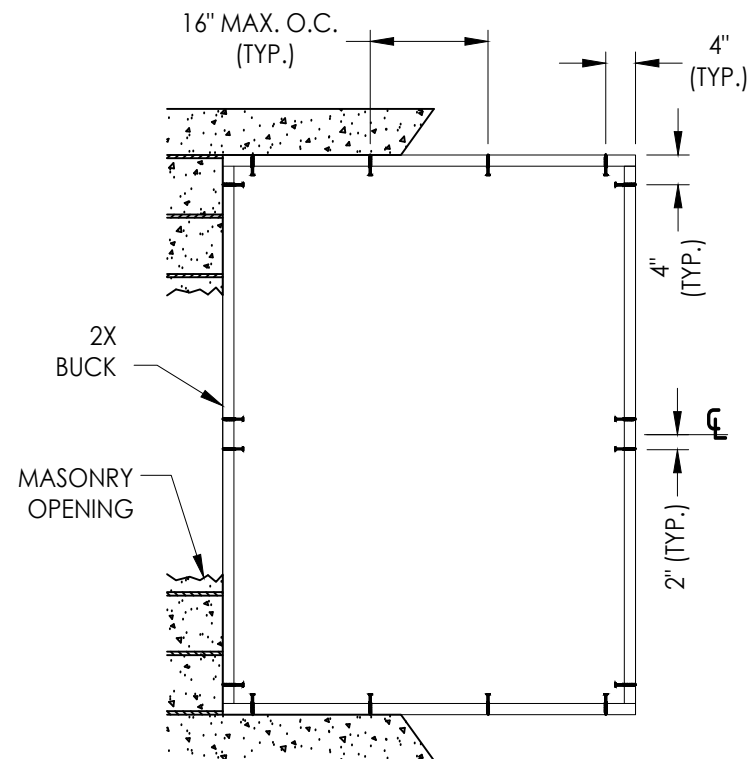
**RW** BUILDING CONSULTANTS, INC.  
 P.O. Box 230, Vairico, FL 33595  
 Phone No.: 813.659.9197  
 FBPE Registry No. 9813

PRODUCT:  
 7700 / 9900 SERIES  
 Vinyl Double Hung Window

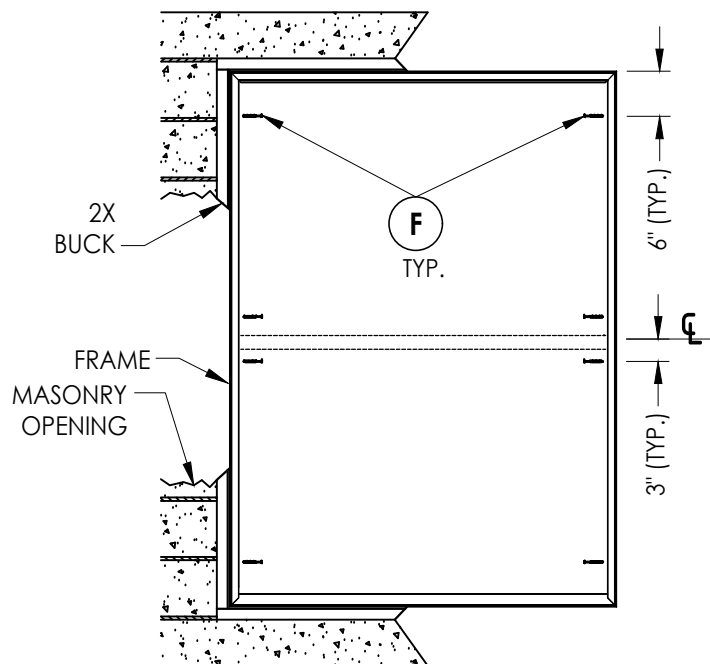
PART OR ASSEMBLY:  
 VERTICAL  
 CROSS SECTIONS

NO.	DATE	REVISIONS	JK	BY
6	7/06/23	UPDATE TO 8TH ED. (2023)	FBC	
5	7/02/20	UPDATE TO 7TH ED. (2020)	FBC	
4	6/01/17	UPDATE TO 6TH ED. (2017)	FBC	
3	5/10/16	REVISE INSTALLATION SCREWS	LFS	
2	1/27/15	UPDATE TO 5TH ED. (2014)	FBC	
1	8/25/14	REVISE SERIES NO.	JK	

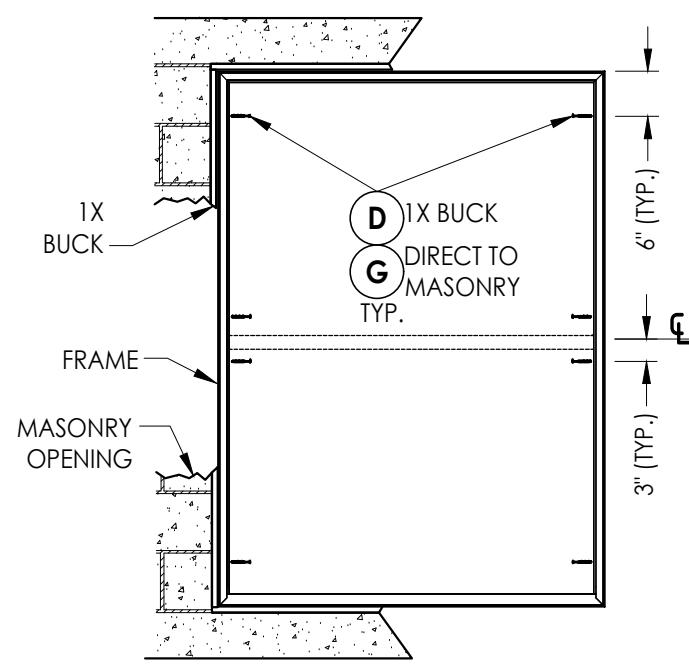
DATE: 6/23/14  
 SCALE: N.T.S.  
 DWG. BY: JK  
 CHK. BY: LFS  
 DRAWING NO.:  
 FL-15819.8  
 SHEET 3 OF 5



**BUCK ANCHORING**



**FRAME ANCHORING**  
2X Buck



**FRAME ANCHORING**  
1X Buck  
Direct to masonry

**CONCRETE ANCHOR NOTES:**

- Concrete anchor locations at the corners may be adjusted to maintain the min. edge distance to mortar joints.
- Concrete anchor locations noted as "MAX. ON CENTER" must be adjusted to maintain the min. edge distance to mortar joints, additional concrete anchors may be required to ensure the "MAX. ON CENTER" dimensions are not exceeded.
- Concrete anchor table:

ANCHOR TYPE	ANCHOR SIZE	MIN. EMBEDMENT	MIN. CLEARANCE TO MASONRY EDGE	MIN. CLEARANCE TO ADJACENT ANCHOR
ITW TAPCON®	1/4"	1-1/4"	2"	4"
DeWALT ULTRACON®+	1/4"	1-1/4"	1"	4"

**WOOD SCREW INSTALLATION NOTES:**

- Maintain a minimum 5/8" edge distance, 1" end distance, & 1" o.c. spacing of wood screws to prevent the splitting of wood.

Documents Prepared By:  
Lyndon F. Schmidt  
P.E. No. 43409

**RW** BUILDING CONSULTANTS, INC.  
P.O. Box 230, Valrico, FL 33595  
Phone No.: 813.659.9197  
FBPE Registry No. 9813

PRODUCT:  
7700 / 9900 SERIES  
Vinyl Double Hung Window

PART OR ASSEMBLY:  
BUCK AND  
FRAME ANCHORING

NO.	DATE	REVISIONS
6	7/06/23	UPDATE TO 8TH ED. (2023) FBC LFS
5	7/02/20	UPDATE TO 7TH ED. (2020) FBC LFS
4	6/01/17	UPDATE TO 6TH ED. (2017) FBC LFS
3	5/10/16	REVISE INSTALLATION SCREWS LFS
2	1/27/15	UPDATE TO 5TH ED. (2014) FBC LFS
1	8/25/14	REVISE SERIES NO. JK
		BY

DATE: 6/23/14

SCALE: N.T.S.

DWG. BY: JK

CHK. BY: LFS

DRAWING NO.:

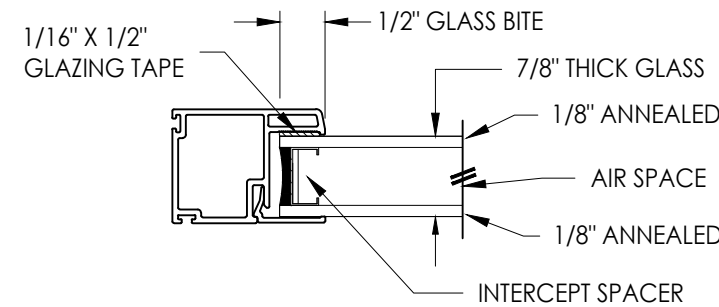
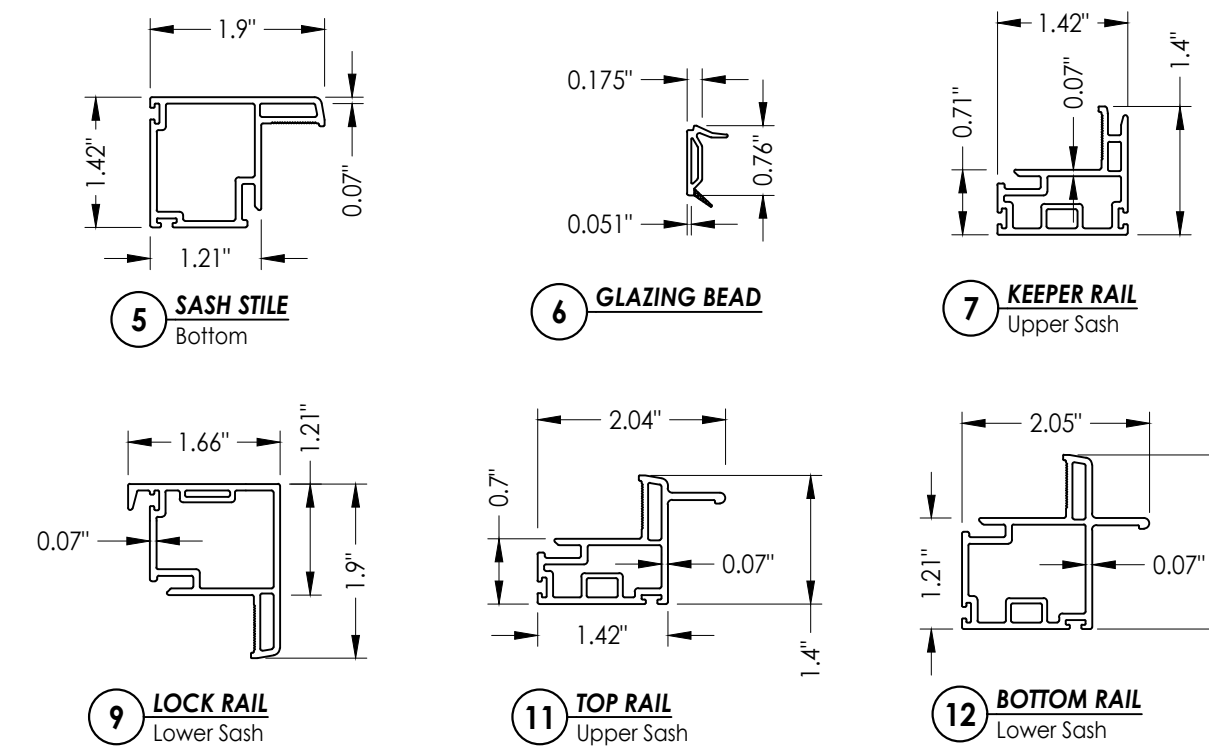
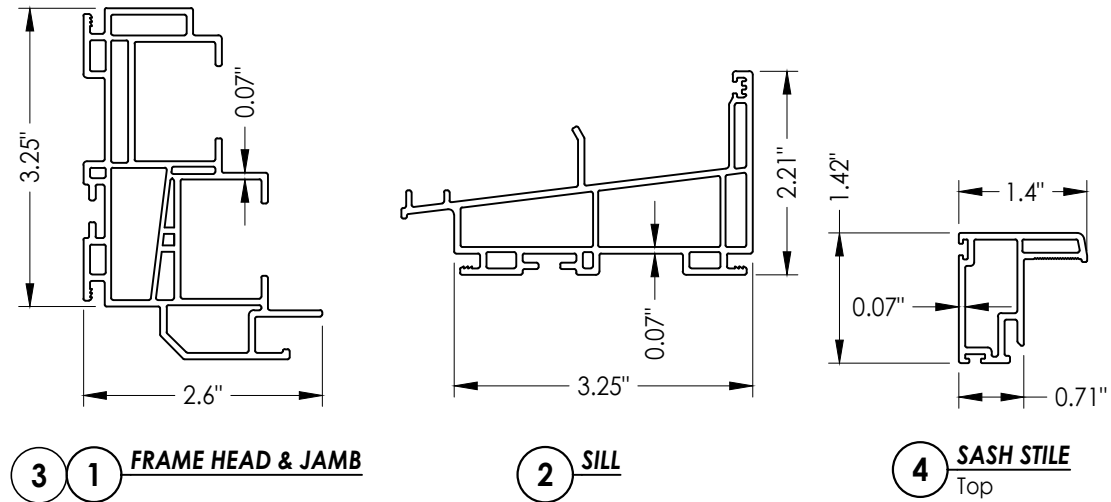
FL-15819.8

SHEET 4 of 5

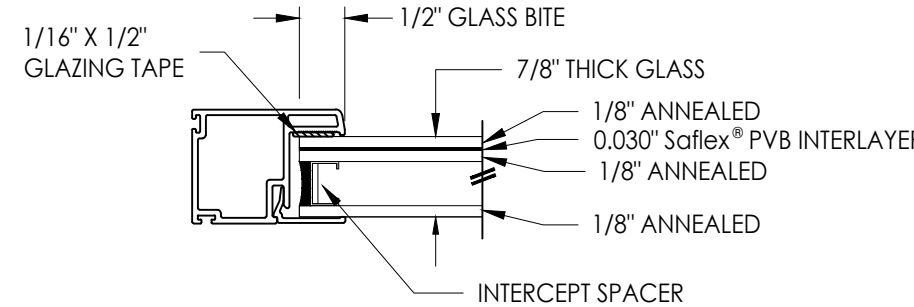
**BILL OF MATERIALS**

ITEM #	DESCRIPTION	MATERIAL
A	1X BUCK SG >= 0.42	WOOD
B	2X BUCK SG >= 0.42	WOOD
C	1/4" MAX. SHIM SPACE	-
D	1/4" X 2-3/4" PFH DeWALT OR ITW CONCRETE SCREW	STEEL
E	MASONRY - 3,000 PSI MIN. CONCRETE CONFORMING TO ACI 301 OR HOLLOW BLOCK CONFORMING TO ASTM C90	CONCRETE
F	#8 X 2" PAN HEAD/TRUSS HEAD WOOD SCREW (1-3/8" MIN. EMBEDMENT)	STEEL
G	1/4" X 2-1/4" PFH DeWALT OR ITW CONCRETE SCREW	STEEL
1	FRAME JAMB* (DH 7701)	PVC
2	SILL* (DH 7703)	PVC
3	FRAME HEAD* (DH 7701)	PVC
4	UPPER SASH STILE* (SE 3035)	PVC
5	LOWER SASH STILE* (SE 3045)	PVC
6	GLAZING BEAD*	PVC
7	KEEPER RAIL UPPER SASH* (SE 3034)	PVC
9	LOCK RAIL LOWER SASH* (SE 3046)	PVC
11	TOP RAIL UPPER SASH* (SE 3037)	PVC
12	BOTTOM RAIL LOWER SASH* (SE 3047)	PVC
16	WEATHERSTRIP ULTRA FAB .270 PILE - 270 -1875B	-
17	WEATHERSTRIP SILLBULB (AMESBURY 32690)	-
19	HEAD ADAPTER* (DH 3005)	PVC
20	LOCK 8513 / 8845 LAWRENCE	PVC
21	KEEPER 2700 - 214 LAWRENCE	PVC
22	#8 X 1" PFH (VINYL LOCK SCREWS)	STEEL
23	#6 X 1-1/2" PFH (VINYL LOCK SCREWS)	STEEL
24	TOP SASH TILT LATCH - ASHLAND	PVC
28	PIVOT BAR - CALDWELL	-
29	#8 X 1/2" SELF TAPPING PPH SMS	STEEL

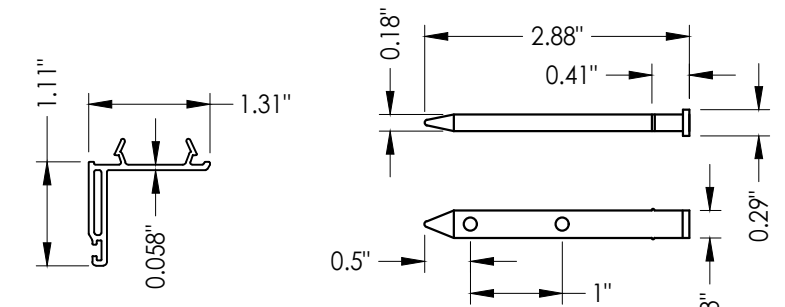
\* THE APPROVED WHITE RIGID PVC EXTERIOR EXTRUSIONS FOR WINDOWS ARE TO BE PRODUCED BY EXTRUDERS LICENSEES IN "AAMA CERTIFICATION PROGRAMS FOR RIGID PVC EXTRUSIONS".



**G1 GLAZING DETAIL**  
(See General Note 3, Sheet 1)



**G2 GLAZING DETAIL**  
(See General Note 3, Sheet 1)



**19 HEAD ADAPTER**      **28 PIVOT BAR**

Documents Prepared By:  
Lyndon F. Schmidt  
P.E. No. 43409

**RW** BUILDING CONSULTANTS, INC.  
P.O. Box 230, Vairico, FL 33595  
Phone No.: 813.659.9197  
FBPE Registry No. 9813

PRODUCT:  
7700 / 9900 SERIES  
Vinyl Double Hung Window

PART OR ASSEMBLY:  
BILL OF MATERIALS  
COMPONENTS & GLAZING DETAIL

	LFS	FBC	FBC	FBC	FBC	JK	BY
6	7/06/23	UPDATE TO 8TH ED. (2023)					
5	7/02/20	UPDATE TO 7TH ED. (2020)					
4	6/01/17	UPDATE TO 6TH ED. (2017)					
3	5/10/16	REVISE INSTALLATION SCREWS					
2	1/27/15	UPDATE TO 5TH ED. (2014)					
1	8/25/14	REVISE SERIES NO.					
NO.	DATE						

REVISIONS

DATE: 6/23/14  
SCALE: N.T.S.  
DWG. BY: JK  
CHK. BY: LFS  
DRAWING NO.: FL-15819.8  
SHEET 5 OF 5